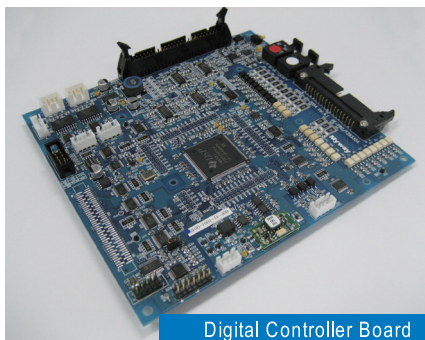


Digital Control Board for Inverter

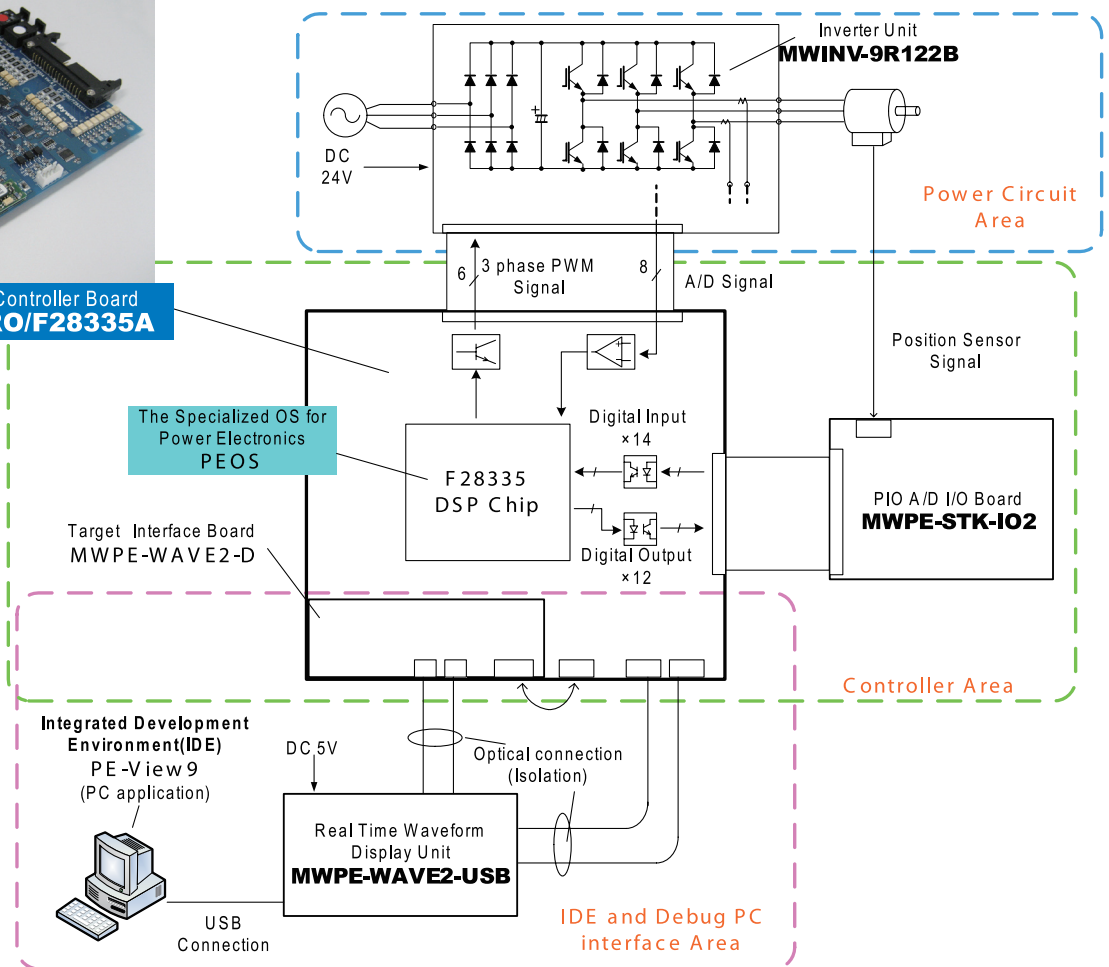
150MHz TI TMS320F28335 DSC based control board for evaluating power converter control system or motor control system. The PE-PRO/F28335A has useful functions on the board. And user can improve development efficiency with PE-VIEW9. This system enables your development efficiency

Features

- High-speed 32bit floating DSP TMS S320F28335 (150MHz)
- For car application function: CAN bus communication port
- For 2 motor control function: ABZ encoder signal input (32bit / 2port)
- Easy to use: PE-View9 / WAVE2 interface, 8 channels real time wave monitor.



Digital Controller Board
PE-PRO/F28335A



用途



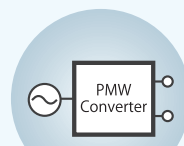
Solar Power Generation



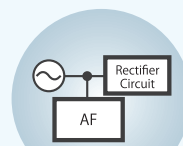
EV



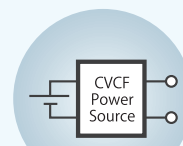
Motor Drive Control



AC Grid Control



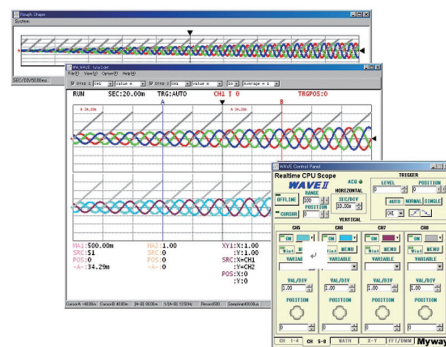
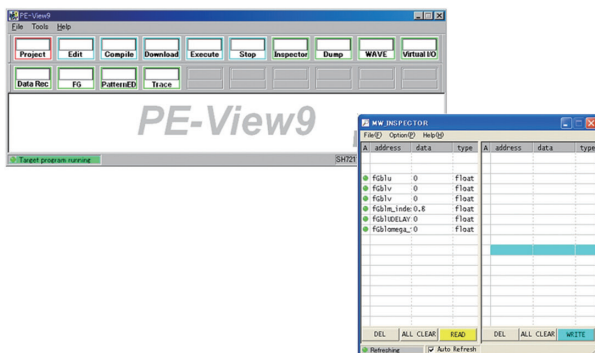
Active Filter



Regulated AC Power Source

Item	Specification
Model	PE-PRO/F28335A (MWPRO-F28335A)
Processor	TMS320F28335PGFA
Clock	150MHz
On-Chip RAM	34k × 16bit
On-Chip Flash Memory	256k × 16bit
Serial EEPROM	64k × 8bit (24LC32A) (I2C)
3-phase PWM	2port (12output)
General PWM	2port (2output)
Digital Input	Photo coupler input : 14input, CMOS : 2 input
Digital Output	Photo coupler input : 12output, CMOS : 2 output, Luminescence : 2output
ABZ counter	32bit / 2port
Interval timer	32bit / 3ch
Serial Communication Port	2ch / RS-232C / start-stop synchronization / 9600,19200,38400,57600,115200bps
CAN Communication Port	1ch / CANstandards 2.0B (Insulated to DSP)
Remote Debugger Port	1ch / Optical connector (using to the communication with PE-VIEW9)
WAVE 2 Function	Correspondence to target interface board MWPE-WAVE2-D
A / D Input	12bit / 16ch / ± 5V / Simultaneous sampling 2ch / Conversion time 80ns
D / A Output	4ch / 12bit
Size	170 × 155mm
Input power	+5V (2A max)

Integrated Develop Environment



Integrated develop environment PE-View9

Real time waveform monitor WAVE2

Actuation environment

PC	Minimum CPU spec Pentium III 1GHz、need 2 USB port
OS	Windows 2000 / XP / Vista / 7
C compiler	TMDSCCS-MCUN01 (TI)
Environment	Inside with air conditioning

There is the possibility that the specification will changes without notice. TMS320F28335 is registered trademark of a Texas Instrument company. Besides, the product name that is entered is the trademark of each company.