

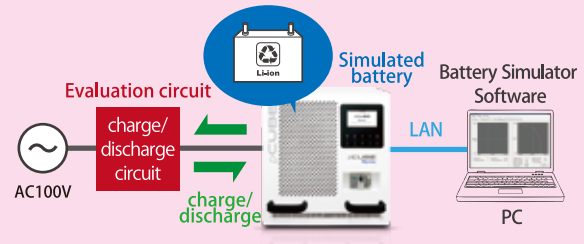
Regenerative DC Power Supply pCUBE Optional Software

Battery Simulator Software MWBFP3-BTS

Suitable for Verification and Analysis in Electrical Storage System and Electric Vehicles circuit

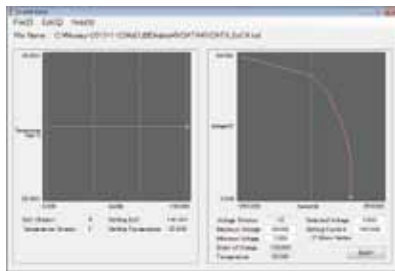
Upon LAN connection of regenerative DC power supply pCUBE and PC installed with Battery Simulator software, pCUBE can be operated as a simulated battery. The characteristics of battery, real time IV characteristics, operating point and charging rate (SOC) can be monitored. Hence analysis and evaluation are possible in electrical storage system and electric vehicle circuit. One of the

special characteristic of pCUBE is the ability to connect both series and parallel, making it a suitable choice for large storage battery simulation.



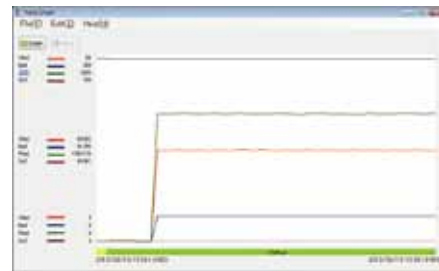
Easy Compilation of Simulated Battery Characteristics

The exclusive IV map editor will record IV curves for each SOC. By setting SOC 0% and 100% and battery maximum capacity (Ah), the software does automatic simulation of IV characteristics.



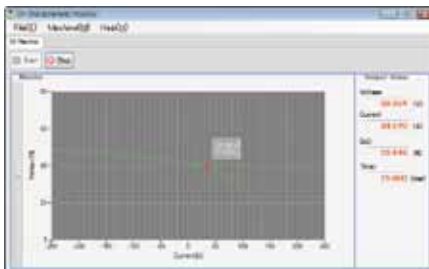
Graphical Display of pCUBE Voltage, Current, Power and Charge Rate

Trend graphs display output voltage, current, power, charge rate of simulated pCUBE wrt time. The graph displays the latest information and transition states of each battery data.



Real Time Data Monitor: a Powerful Analyzing Tool

Real time monitoring of IV characteristics, operating point (voltage, current) and charge rate makes the software a powerful analysis tool in development of electrical storage system.



Co-Simulation on Multiple pCUBE with 1 PC

1 PC can perform simulation for up to 32 pCUBE units under the same LAN coverage. Start/Stop of simulations are independent operations, individual operation condition can be monitored.

No.	Name	Type	IP Address	Port	File Name	Start
1	pCUBE01	Nb	192.168.1.100	10001	SampleData1.csv	Stop
2	pCUBE02	Nb	192.168.1.100	10001		
3	pCUBE03	Nb	192.168.1.100	10001		
4	pCUBE04	Nb	192.168.1.100	10001		
5	pCUBE05	Nb	192.168.1.100	10001		
6	pCUBE06	Nb	192.168.1.100	10001		
7	pCUBE07	Nb	192.168.1.100	10001		
8	pCUBE08	Nb	192.168.1.100	10001		
9	pCUBE09	Nb	192.168.1.100	10001		
10	pCUBE10	Nb	192.168.1.100	10001		
11	pCUBE11	Nb	192.168.1.100	10001		

Recommended Operating Conditions

OS : Microsoft Windows XP/7(32bit), CPU : Intel Core2 Duo 2GHz and above, Memory Space : 2GB and above, HDD : 40GB and above, Resolution : 1024×768 and above

●The company name and product name which are indicated are the trademark or registered trademark of our company or each company. ●Carrying out unapproved reproduction of a part or all of the contents that is written in this catalog is forbidden.

The inquiry about a product, and the request for data

Contact window (Sales Dept.) : **+81-45-548-8857**

●FAX : +81-45-548-8832 ●Mail : sales@myway.co.jp

●Operating hours : 9:00~18:00 on Mon.~Fri. (except Sat., Sun., holiday)

Myway Plus Corporation

Yokohama hanasaki bldg.6-145 Hanasaki-cho
Nishi-ku, Yokohama-shi, KANAGAWA, 220-0022 JAPAN

Copyright© Myway Plus Corporation.

TM003-002-623

The written contents of this catalog are the things as of Jan, 2014.